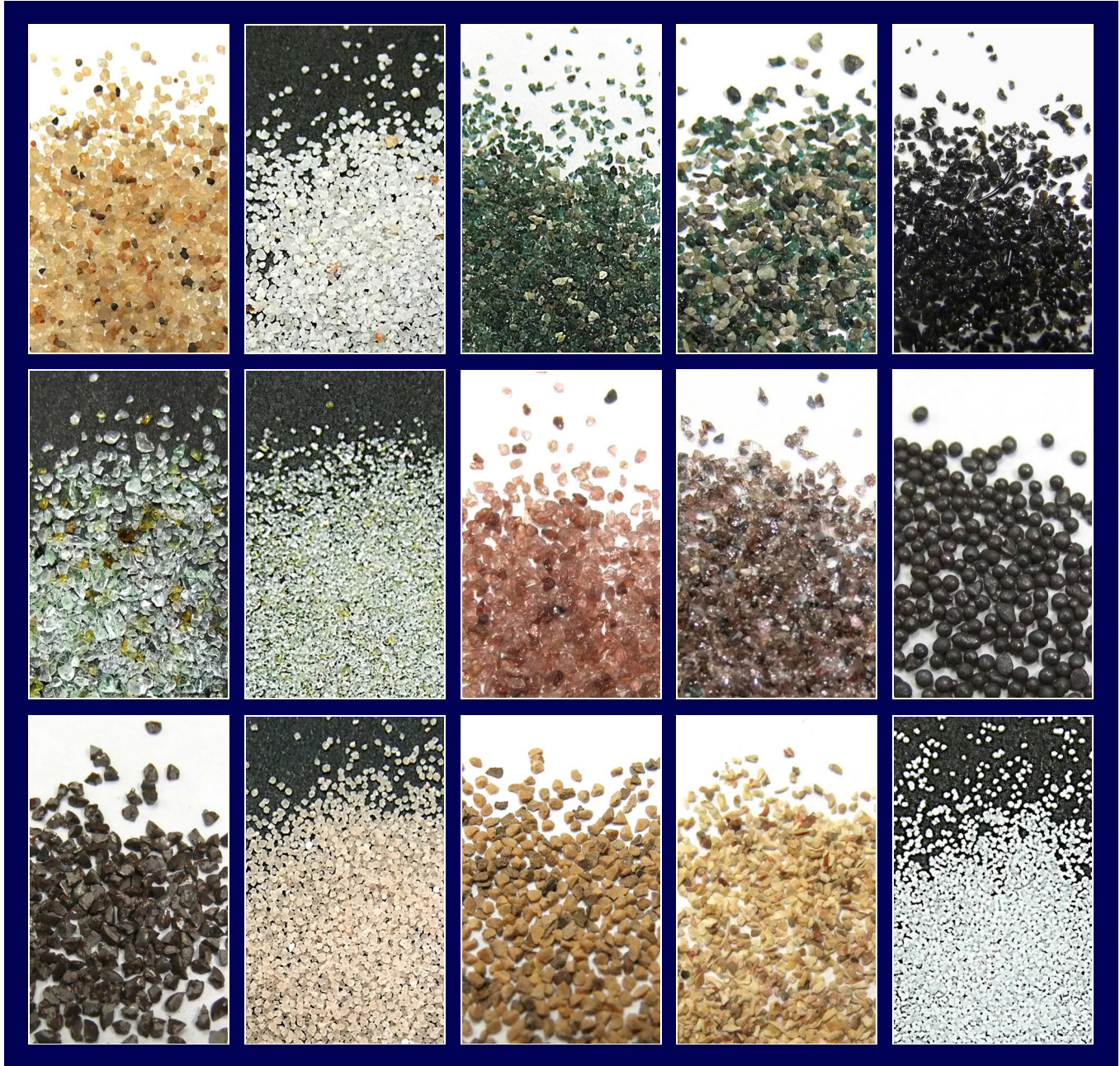




# ABRASIVES CATALOGUE



---

## TABLE OF CONTENTS

PRODUCT	PAGE
<b>ABRASIVES</b>	
Target Silica Abrasive.....	1
Lane Mountain Silica Sand.....	1
Green Diamond.....	1
Black Magic.....	1
Kleen Blast.....	2
Duramax.....	2
Maxiblast.....	2
Starblast.....	2
Glass Abrasive.....	2
Garnet.....	3
Aluminum Oxide.....	3
Steel Shot & Grit.....	3
Walnut Shell.....	3
Corn Cob.....	4
K2-Strip.....	4
Soda Blast.....	4
<b>SALT REMOVERS &amp; TESTS</b>	
CHLOR*RID.....	5
CHLOR*RID DTS.....	5
CHLOR*TEST.....	5
CHLOR*TEST A.....	5
CHLOR*TEST CSN.....	6
CHLOR*BLAST.....	6
<b>CHARTS &amp; TABLES</b>	
Degrees of Cleanliness of Blast-Cleaned Surfaces.....	6
Compressed Air and Abrasive Consumption.....	7
Minimum Compressor Air Line Diameter.....	7
Nozzle Size and Air Consumption.....	7
Profiles.....	7

**Data Spec sheets and Safety Data Sheets (SDS) are available online**

**<http://www.targetproducts.com/prod-category.aspx>**

**NOTICE:** Obtain the applicable **LIMITED WARRANTY** at [www.targetproducts.com/product-warranty](http://www.targetproducts.com/product-warranty)  
Or send a written request to Target Products Ltd., Five Concourse Parkway, Atlanta, GA 30328, USA.  
© Quikrete Canada Holdings, Limited. Manufactured by Target Products Ltd. ©2020 Quikrete International, Inc.

# ABRASIVES

## TARGET SILICA ABRASIVE



TARGET® Silica Abrasives are high quality, close graded silica sands which undergo up to three washings to provide a clean, high quality material. Target Silica Abrasives are suitable for sandblasting of steel, concrete or wood in preparation for coating or repair, to obtain architectural effects in concrete or wood, an aggregate for cementitious or polymer grouts, mortars and concrete and for foundry mold sand and traction sand. Several size grades are produced at our Morinville, AB plant: 16-30, 12-40, 12-50, 20-40, 30-50, 40-70, 50-100.

### Packaging

Available in multi-wall paper bags: 22.7 kg (50 lb)  
1750 kg (3858 lb) bulk bags, or as bulk deliveries in dump trucks or pneumatic tankers.

## LANE MOUNTAIN SILICA SAND



Lane Mountain Silica Sand is a high quality, high purity, close graded white silica sand. Lane Mountain Silica sand is suitable for sandblasting steel, concrete and wood and as an additive for white plaster, mortar or concrete. Available in six grades: LM #16, LM #20-30, LM #30, LM #50, LM #70, LM #125

### Packaging

Available in paper bags: 22.7 kg (50 lb),  
Bulk bags of approx. 1360 kg (3000 lb)  
Deliveries by pneumatic tank trucks are also available.

## GREEN DIAMOND NICKEL SLAG



TARGET® Green Diamond Abrasive Grits are high efficiency blasting grits prepared by selective screening of nickel slag. Three gradations are available to provide materials suitable for most blast cleaning operations. All three grades have a Moh's hardness of 6.5 to 7, giving improved cutting and productivity relative to conventional industrial and silica sands. Available grades are: Medium #16-36, Fine #20-50, Extra Fine #30-60

### Packaging

Available in 22.7 kg (50 lb) plastic bags  
Bulk bags of approx 1814 kg (4000 lb)  
Deliveries by pneumatic tank trucks are also available.  
Shipments to US destinations can also be made in 100 lb paper bags.

Recycling Programs Available

## BLACK MAGIC COAL SLAG



TARGET® Black Magic is an abrasive grit prepared by selective screening of coal slag to give a series of clean, sharp abrasives meeting the requirements of the abrasive blast cleaning industry. The product meets the requirements for classification as a Type I Inorganic Material under U.S. Military Specification MIL-A-22262A (SH). Available sizes are: 16-40, 20-40, 40-60

### Packaging

Available in 22.7 kg (50 lb) paper bags or in bulk bags of approx. 1800 kg (3960 lb)  
Bulk deliveries by pneumatic tank trucks are also available.

---

## KLEEN BLAST



Kleen Blast is prepared by selective screening of copper slag to give a series of clean, sharp abrasives meeting the needs of the abrasive blast cleaning industry. The product is approved by the California Air Resources Board for use in dry, unconfined blasting operations. Available in following sizes: Coarse, Medium, Fine

### Packaging

All grades available 22.7 kg (50 lb)  
Bulk bags of approx 1814 kg (4000 lb) or pneumatic tanker loads.

---

## DURAMAX



DURAMAX Abrasives® are a synthetic garnet made via world leading technology. With high compressive strength and high hardness, it is an ideal abrasive. The performance of garnet, at a fraction of the price.

It is three times stronger than natural garnet so that your compressor's power is put to full use. Save your money with this high re-use abrasive (3+ times). Available in three sizes: 18-30, 20-45, 30-80

### Packaging

25 kg Bags, 40 per pallet and Shrink-wrapped  
1250 kg Bulk Bags: with PE inside liner, packaged one per pallet

---

## MAXIBLAST



MAXIBLAST® holds a solid place in the North American market because of its unparalleled quality. Recommended for cleaning rust, paint or scale on steel. MAXIBLAST features: Low dust emission, Cleans faster requiring less product. Contains less than 0.1% free silica. Compliant with SSPC-AB1 and MIL-A-22262B (SH) standards.

### Packaging

Maxiblast 20/40: 1814 kg (4000 lb) bulk bag, 1 per pallet

---

## STARBLAST



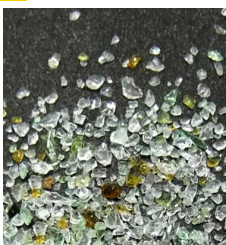
STARBLAST® blasting abrasives are a loose blend of coarse and fine staurolite sands that are uniformly sized and have clean, rounded surfaces. Mined from mineral deposits in Northeast, Florida, the naturally occurring sands are scrubbed and chemically washed to ensure freedom from dirt, dust, and ultrafines.

### Packaging

All grades available 22.7 kg (50 lb)  
Bulk bags of approx 1814 kg (4000 lb) or pneumatic tanker loads.

---

## GLASS ABRASIVE



Glass Abrasives are clean, high quality, close graded, processed, crushed, recycled abrasives available in nine grades. Custom blends are available upon request. Grades sizes available are: 10-30, 12-50, 30-60, 50-100.

### Packaging

Available in 22.68 kg (50 lb) paper bags, and in bulk bags of approx 1600 kg (3520 lb)

## GARNET



Garnet is a naturally occurring almandite garnet, the hardest of all known garnet types. All grades have a Moh's hardness of 8, with a specific gravity of 4.1. Garnet is available in size grades to meet requirements for any project. Grade sizes are: # 12-25, # 20-40, #30-60, # 50-80, # 80, #120

### Packaging

Available in 25 kg (55 lb) bags and in bulk bags of approx. 1000 kg (2205 lb)  
Delivery by pneumatic tank truck is also available.

## ALUMINUM OXIDE



Aluminum Oxide grits are the most efficient blasting media. It is the fastest cutting product used for industrial blasting and surface preparation, due to its extreme hardness of 9 on Moh's scale. Aluminum Oxide is a manufactured material, electrofused from bauxite and is exclusively produced for Target Products Ltd.. Grit sizes available: 16, 24, 36, 54, 70, 100, 220

### Packaging

Available in 25 kg (55 lb) bags

## STEEL SHOT & GRIT



Steel Shot & Grit are durable metal abrasives that meet the requirements of Standard Specification 20-66 for Cast Steel Abrasives, published by the Steel Founders' Society of America.

Shot sizes available as: S 1320, S 1110, S 930, S 780, S 660, S 550, S 460, S 390, S 330, S 280, S 230, S 170, S 110, S 70

Grit sizes available: G 10, G 12, G 14, G 16, G 18, G 25, G 40, G 50, G 80, G 120, G 200, G 325

### Packaging

Available in 40 – 22.7 kg (50 lb) bags / pallet or in 55 US gal drums with weight ranging from 1500 to 2000 lbs depending on product size.

## WALNUT SHELL



Walnut Shell is a blast cleaning media for removal of paint, flash rusting, burrs and other flaws in plastic and rubber molding, aluminum and zinc die casting and the electronics industry. It is used as a sand replacement for paint removal, graffiti removal and general cleaning in restoration of buildings, bridges and outdoor statuary. TARGET Walnut Shell is non-sparking and used for aircraft engine clean out and for cleaning steam turbines.

Available in 12-20 and 20-40.

### Packaging

Available in 22.68 kg (50 lb) bag, 50 per pallet  
All oil well grades and custom grades available.

## CORN COB



Corn Cob is the choice when the job calls for softer, less dusty and an environmentally safe abrasive. This blast cleaning media is suitable for metal, wood, fiberglass, plastic, masonry, electrical insulators and other sensitive materials. It is non-sparking and safe to use around gears and hydraulic rams. Available size is 20-40.

### Packaging

Available in 40 lb bags, 48 per pallet

## K2-STRIP



K2-Strip is an odourless, non-sparking, non-volatile, non-flammable and non-controlled substance. It is water soluble. No special disposal considerations are required.

K2-Strip is between two and three times faster than sodium bicarbonate. K2-Strip will leave a slightly increased profile without pitting the metal. Although not recommended for use on fiberglass, plastic, aluminum or other soft substrates, this new media will allow for a significant reduction in the time required to remove coating off metals.

### Packaging

Available in 25 kg (55 lb) bags, 56 bags / pallet

## SODA BLAST



Soda blasting uses small sharp crystals of sodium bicarbonate (baking soda) that are propelled, by pressurized air or water, at a surface to remove coatings. Sodium bicarbonate is a food grade material that is non hazardous, water soluble, and won't damage most surfaces.

Soda blasting is an environmentally friendlier way of removing paint, dirt, coatings, and other surface contaminants that do not cause damage to the surfaces being cleaned. The action of the sodium bicarbonate used does not cause heat buildup, sparks, or abrasion to substrate.

Available in: Industrial Formula (grade 5), Commercial Formula (grade 5L)

### Packaging

Available in 22.7 kg (50 lb) bags, 50 per pallet

# SALT REMOVERS & TESTS

## CHLOR\*RID

*The easiest and most economical way to remove soluble salt contaminants*



CHLOR\*RID is an organic bonding chemical blend which aids in the removal of chlorides, sulphates, nitrates and most other soluble salts. It is most effective when used prior to primer or coating application on a variety of surfaces including ferrous and non-ferrous metals, wood, plastic and concrete. It is suitable for use on marine vessels, bridges, petroleum processing and storage facilities, power plants and public utilities, pulp and paper industries and transportation equipment. CHLOR\*RID contains no volatile organic compounds (VOC's) and is biodegradable.

### Packaging

Available in 4, 20, 220 liter (1, 5 and 55 US gal) containers.

## CHLOR\*RID DTS

*The easiest and most economical way to remove soluble salt contaminants*



CHLOR\*RID DTS (Direct To Surface) is a ready to use liquid salt remover. It is used directly from the container typically for spot repair and maintenance painting.

CHLOR\*RID DTS is an organic bonding chemical blend which aids in the removal of chlorides, sulfates and nitrates and most other soluble salts; contains no volatile organic compounds (VOC's) and is biodegradable.

### Packaging

Available in 4, 20, 220 liter (1, 5 and 55 US gal) containers.

## CHLOR\*TEST (for testing metal surfaces)



### Packaging

1 kit – 5 tests

CHLOR\*TEST™ is a new method to field test surfaces for chlorides. This new product has been developed for ease of use and to prevent outside cross contamination during field test procedures. This revolutionary new test method is so complete and easy to use that even the least experienced inspector can get accurate results. Test after rigorous test has proven CHLOR\*TEST™ more reliable than any other method of surface salt testing. The components are pre-measured to ensure accurate results in parts per million and micrograms per centimetre square. In addition, no temperature correction is needed when used from 41°F to 176°F. Field test inspectors around the world use this innovative product with confidence on virtually any surface at any angle. It is designed to be used on vertical, horizontal or overhead surfaces. CHLOR\*TEST™ is recommended as the easiest, most accurate method for testing on such costly structures as ships, aircraft, offshore rigs, tanks, bridges and storage tanks. Test kit includes everything necessary for testing.

## CHLOR\*TEST A (for testing abrasives)

*The easiest and most economical way to remove soluble salt contaminants*



CHLOR\*TEST A™ is the only complete method to field test abrasives for chlorides. This new product has been developed for ease of use and to prevent outside cross contamination during field test procedures. This revolutionary new test method is so complete and easy to use that even the least experienced inspector can get accurate results. Test kit includes everything necessary for testing.

### Packaging

Kit (4 Tests)

## SALT REMOVERS & TESTS

---

**CHLOR\*TEST "CSN"<sup>TM</sup>** (a complete test kit that tests all three salts: Chlorides, Sulphates, and Nitrates).



**CHLOR\*TEST "CSN Salts"** offers the specifier the availability of trouble-free performance testings, in the field, for chlorides, sulfates, and nitrates from *one* extraction.

The **CHLOR\*TEST "CSN Salts"** and **CHLOR\*TEST** kits all use a unique patented extract solution, **CHLOR\*EXTRACT<sup>o</sup>**, to retrieve surface salt contamination. This special extract enhances retrieval rates, thereby increasing accuracy. The greater the retrieval rate, the more accurate the test results.

Surface sampling is simplified by use of the patented **CHLOR\*SLEEVE<sup>®</sup>**. Sampling can be done overhead, vertically, horizontally or any angle with this device.

The kit includes a re-usable colorimeter which measures sulfates to  $\pm 1$  ppm accuracy.

### **Packaging**

Hard Shell Kit (5 test)

Kit refill (5 tests)

---

## **HOLD\*BLAST<sup>TM</sup>** SURFACE PASSIVATOR



**HOLD\*BLAST** is a concentrated organic chemistry which is added to water. This biodegradable product does not leave a film or residue to interfere with coating adhesion.

**HOLD\*BLAST** is used to prevent flash rust through surface passivation.

It is a cost effective, environmentally safe, coating friendly additive to prevent flash rusting.

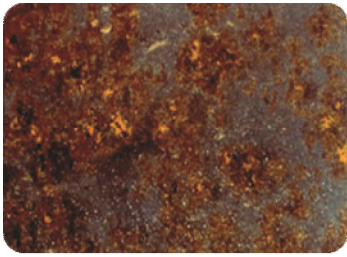
### **Packaging**

Available in 20 liter (5 US gal) containers.

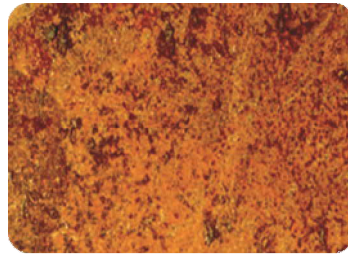




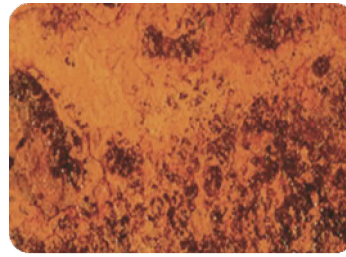
CHARTS AND TABLES



KEY: Steel where mill scale has started to flake and light rusting occurs



KEY: Steel where all mill scale has flaked off and complete rusting has taken place

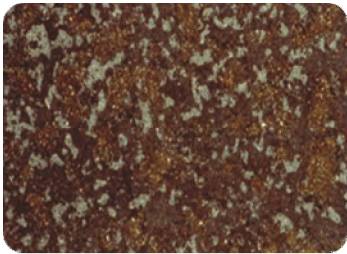


KEY: Steel where pitting and complete rusting has occurred

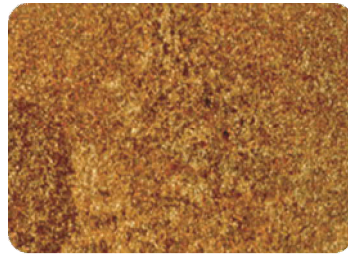
DEGREES OF CLEANLINESS OF BLAST-CLEANED SURFACES

\*Images shown are previously uncoated surfaces, viewed without magnification.

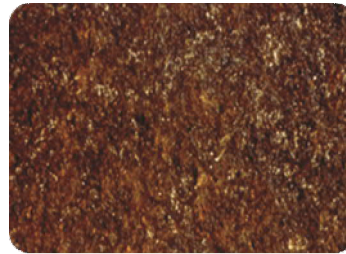
SSPC Std. NACE Std. SIS Std.



Brush-Off



Brush-Off



Brush-Off

BRUSH-OFF

Tightly adherent mill scale, rust, and coatings may remain on the surface. Mill scale, rust and coatings are considered adherent if they cannot be removed with a dull putty knife.

SSPC-SP 7 NACE No 4 SA-1



Commercial



Commercial



Commercial

COMMERCIAL

Evenly dispersed very light shadows, streaks and discolorations caused by rust stains, mill scale or coatings remain on no more than 30 percent of the surface.

SSPC-SP 6 NACE No 3 SA-2



Near-White Metal



Near-White Metal

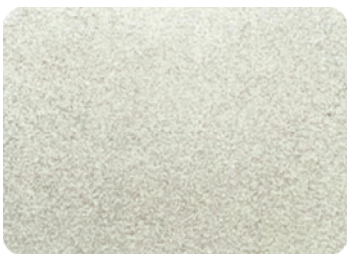


Near-White Metal

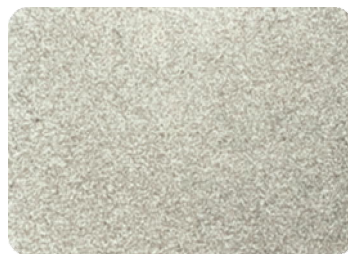
NEAR-WHITE METAL

Evenly dispersed very light shadows, streaks and discolorations caused by rust stains, mill scale or coatings may remain on no more than 5 percent of the surface.

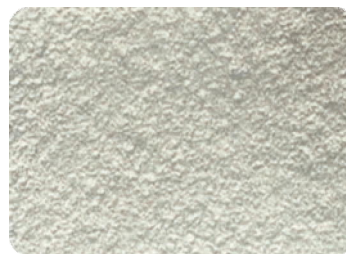
SSPC-SP 10 NACE No 2 SA-2-1/2



White Metal



White Metal



White Metal

WHITE METAL

Free of all visible oil, grease, dirt, dust, mill scale, rust and coatings.

SSPC-SP 5 NACE No 1 SA-3

## COMPRESSED AIR AND ABRASIVE CONSUMPTION

Nozzle Orifice	Pressure at the Nozzle (psi)								Air (in cfm) Abrasive & HP requirements
	50	60	70	80	90	100	125	140	
No. 2 (1/8")	11	13	15	17	18.5	20	25	28	Air (cfm)
	.67	.77	.88	1.01	1.12	1.23	1.52	1.70	Abrasive (cu.ft./hr)
	67	77	88	101	112	123	152	170	& lbs/hr
	2.5	3	3.5	4	4.5	5	5.5	6.2	Compressor hp
No.3 (3/16")	26	30	33	38	41	45	55	62	Air (cfm)
	1.50	1.71	1.96	2.16	2.38	2.64	3.19	3.57	Abrasive (cu.ft./hr)
	150	171	196	216	238	264	319	357	& lbs/hr
	6	7	8	9	10	10	12	13	Compressor hp
No. 4 (1/4")	47	54	61	68	74	81	98	110	Air (cfm)
	2.68	3.12	3.54	4.08	4.48	4.94	6.08	6.81	Abrasive (cu.ft./hr)
	268	312	354	408	448	494	608	681	& lbs/hr
	11	12	14	16	17	18	22	25	Compressor hp
No. 5 (5/16")	77	89	101	113	126	137	168	188	Air (cfm)
	4.68	5.34	6.04	6.72	7.40	8.12	9.82	11.0	Abrasive (cu.ft./hr)
	468	534	604	672	740	812	982	1100	& lbs/hr
	18	20	23	26	28	31	37	41	Compressor hp
No. 6 (3/8")	108	126	143	161	173	196	237	265	Air (cfm)
	6.68	7.64	8.64	9.60	10.52	11.52	13.93	15.60	Abrasive (cu.ft./hr)
	668	764	864	960	1052	1152	1393	1560	& lbs/hr
	24	28	32	36	39	44	52	58	Compressor hp
No. 7 (7/16")	147	170	194	217	240	254	314	352	Air (cfm)
	8.96	10.32	11.76	13.12	14.48	15.84	19.31	21.63	Abrasive (cu.ft./hr)
	896	1032	1176	1312	1448	1584	1931	2163	& lbs/hr
	33	38	44	49	54	57	69	77	Compressor hp
No. 8 (1/2")	195	224	252	280	309	338	409	458	Air (cfm)
	11.60	13.36	15.12	16.80	18.56	20.24	24.59	27.54	Abrasive (cu.ft./hr)
	1160	1336	1512	1680	1856	2024	2459	2754	& lbs/hr
	44	50	56	63	69	75	90	101	Compressor hp

\*Consumption rates are based on abrasives that weigh 100 pounds per cubic foot.

### MINIMUM COMPRESSOR AIR LINE DIAMETER

Nozzle No.	Nozzle Orifice Size	Minimum Air Line ID
No. 3	3/16" (5.0 mm)	1" (25.0 mm)
No. 4	1/4" (6.5 mm)	1" (25.0 mm)
No. 5	5/16" (8.0 mm)	1-1/4" (32.0 mm)
No. 6	3/8" (9.5 mm)	1-1/2" (38.0 mm)
No. 7	7/16" (11.0 mm)	2" (50.0 mm)
No. 8	1/2" (12.5 mm)	2" (50.0 mm)
No. 10	5/8" (16.0 mm)	2-1/2" (64.0 mm)
No. 12	3/4" (19.0 mm)	3" (76.0 mm)

### NOZZLE SIZE AND AIR CONSUMPTION

Nozzle No.	Orifice Size	Air Flow in CFM	Increase in Air Consumption
No. 4	1/4" (6.5 mm)	81 cfm	
No. 5	5/16" (8.0 mm)	137 cfm	69% more than No.4
No. 6	3/8" (9.5 mm)	196 cfm	43% more than No.5
No. 7	7/16" (11.0 mm)	254 cfm	29% more than No.6
No. 8	1/2" (12.5 mm)	338 cfm	33% more than No.7

### PROFILES ARE EXPRESSED IN MILS, MICRONS, OR MILLIMETERS

1 mil = 1/1000 inch  
 25 microns = 1 mil  
 25.4 millimeters = 1 inch  
 39 mils = 1 millimeter





## CONTACT INFORMATION

FOR TECHNICAL AND SALES ASSISTANCE:

---

### BRITISH COLUMBIA

DEBRA BOISVERT:

**Tel:** 1 604 760 5594

**Email:** [Debra.Boisvert@targetproducts.com](mailto:Debra.Boisvert@targetproducts.com)

### ALBERTA

NEIL MOORE:

**Tel:** 1 780 905 6511

**Email:** [Neil.Moore@targetproducts.com](mailto:Neil.Moore@targetproducts.com)

## PLANT LOCATIONS

---

### VANCOUVER PLANT:

**Tel:** 1 604 856 7976

**Fax:** 1 604 856 7972

1080 Bradner Road  
Abbotsford, BC  
Canada V4X 1H8

**Toll Free:** 1 888 484 1258

**Orders:** [AbbotsfordOrder@Quikrete.ca](mailto:AbbotsfordOrder@Quikrete.ca)

### CALGARY PLANT:

**Tel:** 1 403 279 8189

**Fax:** 1 403 279 4829

5150 90 Avenue, SE  
Calgary AB  
Canada T2C 2T2

**Toll Free:** 1 800 661 8482

**Orders:** [CalgaryOrder@Quikrete.ca](mailto:CalgaryOrder@Quikrete.ca)

### EDMONTON PLANT:

**Tel:** 1 780 939 3033

**Fax:** 1 780 939 3044

9503 87 Avenue  
Morinville AB  
Canada T8R 1K6

**Toll Free:** 1 800 575 0500

**Orders:** [MorinvilleOrder@Quikrete.ca](mailto:MorinvilleOrder@Quikrete.ca)

### WINNIPEG PLANT:

**Tel:** 1 204 654 8320

**Fax:** 1 204 654 8329

400 Pandora Avenue W  
Winnipeg MB  
Canada R2C 3A5

**Toll Free:** 1 855 654 8320

**Orders:** [WinnipegOrder@Quikrete.ca](mailto:WinnipegOrder@Quikrete.ca)